

GEOTAC300

PORTABLE MTSAT LRIT

FEATURES

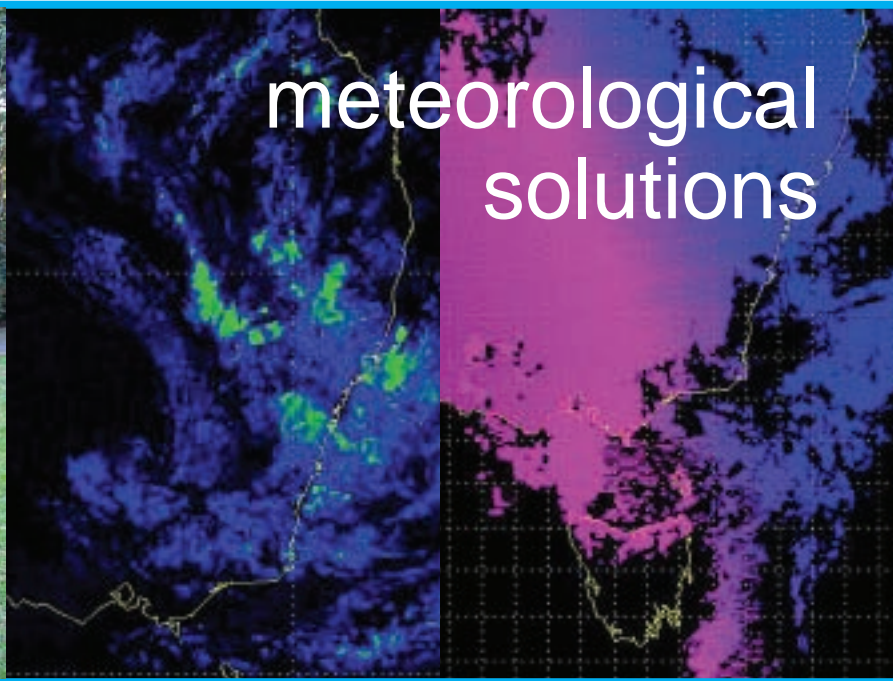
- Portable antenna with feed and downconverter
- Rugged signal interface and processing unit
- Image display laptop computer, incorporating processing and ingest workstation
- Integrated receiver
- Ingest and acquisition software
- METEOR LT image processing software
- Rugged carry cases

The GEOTAC300 satellite groundstation is designed for easy transportation and rapid erection in remote or hostile locations.

GEOTAC300 is a highly reliable, high-performance system designed to receive data from the Japan Meteorological Agency's MTSAT-1R spacecraft. It is a complete turn-key system, providing all hardware and software necessary to receive CCSDS transmissions from the spacecraft and process the data into image files.

The antenna and receiving equipment are easily transported in ruggedized cases, and can be quickly erected at remote locations.

REMOTE SENSING



The GEOTAC 300 satellite groundstation is a portable, reliable, high-performance, complete turn-key system.

The system consists of an antenna mount and a case mounted Signal Interface and Processing Unit. The Signal Interface and Processing Unit distributes power to all system components and accepts and demodulates the RF signal from the antenna.

The inbuilt computer and software displays and analyzes the received data.

Transit cases are provided to allow safe transportation of the complete system. The complete system can be assembled and made operational in less than 30 minutes.



TECHNICAL SPECIFICATIONS

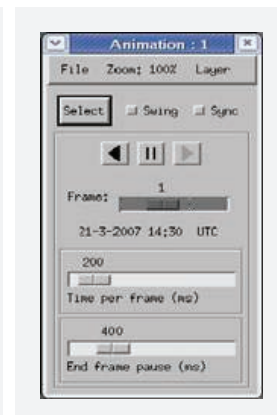
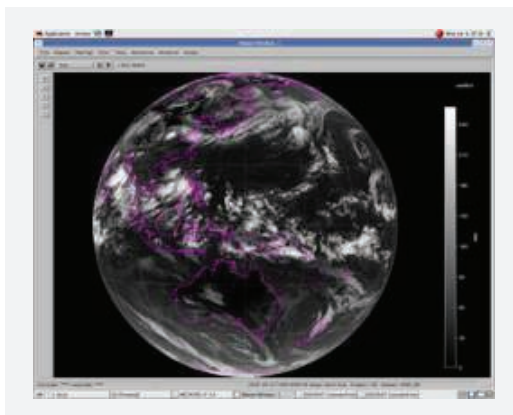
ANTENNA

Type	Mesh, six petals
Diameter	2.3m
Alignment	Integrated signal level indicator
G/T	10.5dB typical at 1691MHz
Feed	Integrated cavity dipole feed and low noise 45k block downconverter
Assembly	Single allen key and captivated pins
Transport	Transport case supplied
Weight	45.5kg

RECEIVER

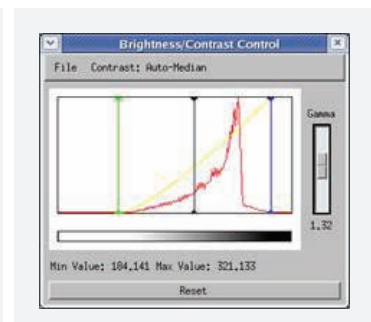
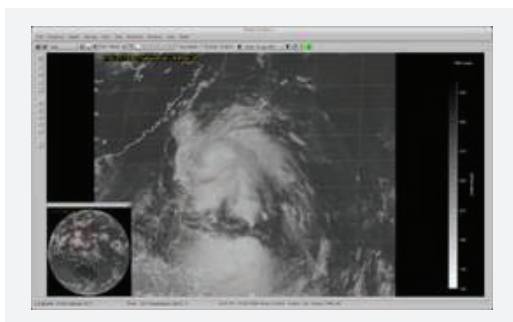
Input Frequency	126 to 154 MHz
Input dynamic range	-90 to -50dBm
Input Impedance	50 ohms
Demodulation modes	BPSK, PSK
Support symbol rates	0.1 to 2.7 MSPS
Temperature (operating)	0 to 50 degrees C non-condensing
Interface	RS-232 9600 baud

Image loaded for analysis



Animation. File selection, loop speed and save as MPEG.

Zoomed image with pan capability



Brightness and contrast tool, with automatic equalisation option.