

METEOR

Satellite Image Analysis Software

FEATURES

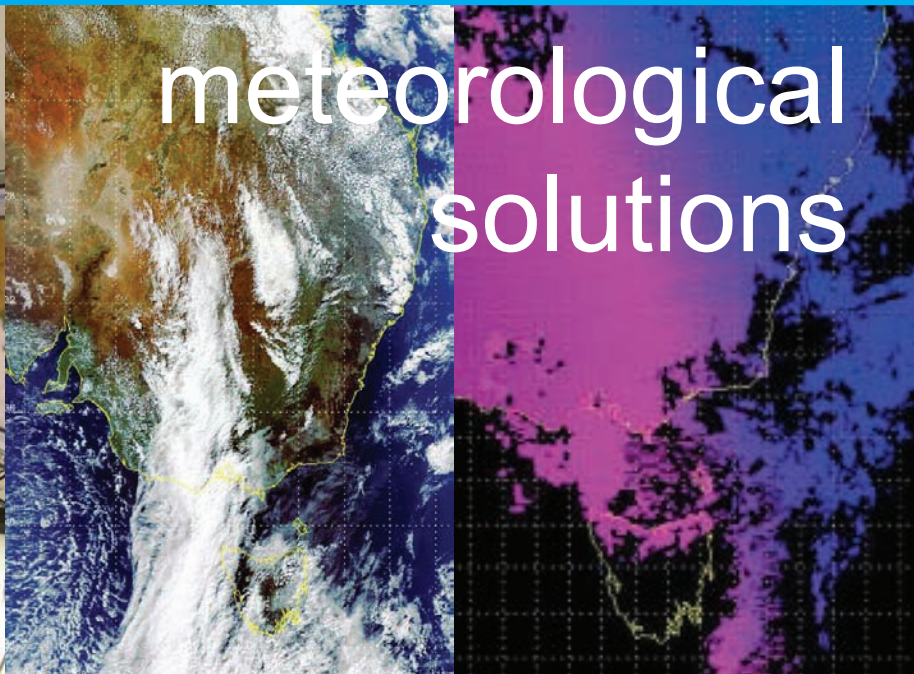
- Multiple satellite image display
- High performance – OpenGL based graphics
- Gridline overlay
- Support for standard and user defined colortables
- Scatter plots, transect plots
- Histogram equalization
- Image zooming and panning
- Basemap overlay (NASA Blue Marble)
- Channel combinations, including GRIB products
- Overlay of numerical model products
- Range/bearing and speed calculations
- Brightness and contrast image enhancements
- Histogram plot and image statistics
- Automated Dvorak Technique

METEOR is a multi-platform satellite image display and analysis application.

METEOR includes extensive image analysis functions and has been enhanced with extra functionality to make it particularly suitable for the analysis of remote sensing satellite data.

METEOR can be used in conjunction with ES&S polar orbiting and/or geostationary groundstation systems to display imagery from: Aqua and Terra MODIS; NOAA HRPT; Fengyun 1D CHRPT; MTSAT LRIT & HRIT; Fengyun 2C SVISSR, METOP AVHRR, ATOVS & IASI, and others (including future satellites NPP).

SOFTWARE

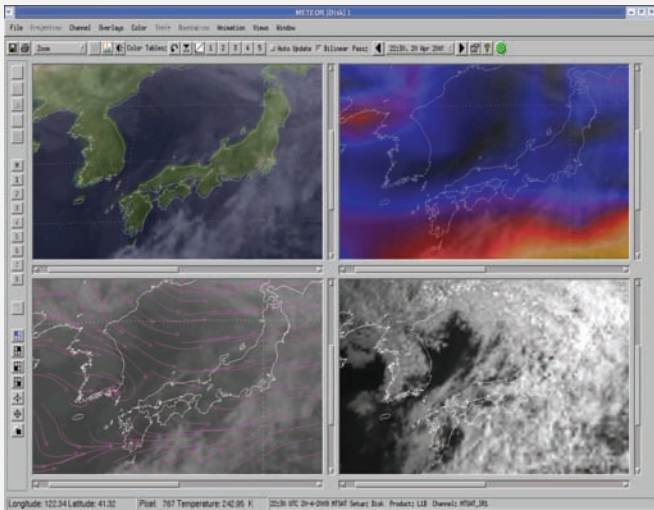


Satellite image display and analysis software.

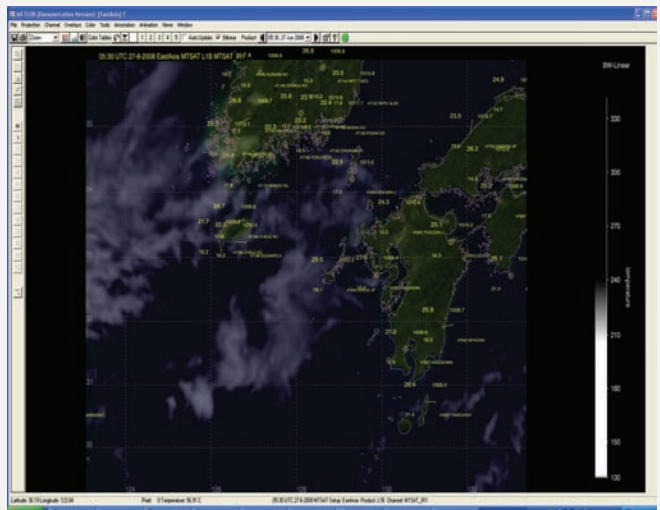
Additional features include:

- Coastline, topography and river overlays (global datasets)
- Active cursor readouts: lat/long, pixel and physical values
- Industry standard input and output products
- User-defined annotations
- Multiple map projections
- Animation loops of full-size or zoomed imagery. Animation can be configured to auto-update when new data becomes available. Multiple animation loops can be synchronized. Animation pan/zoom. Active cursors for TC analysis
- Image combination, supporting multi-resolution and images from different satellites

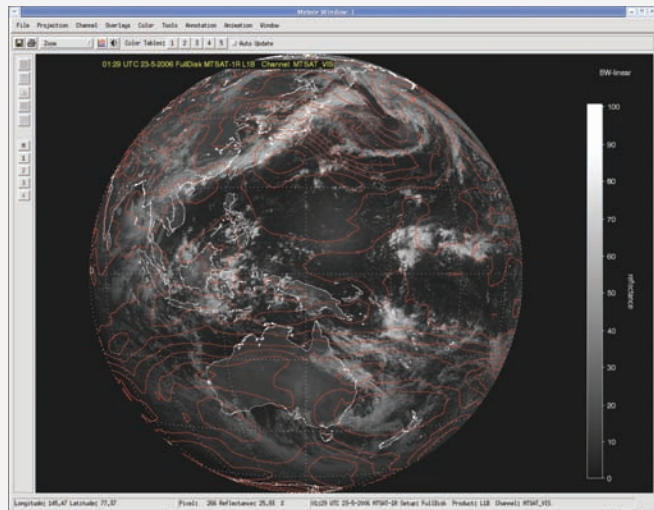




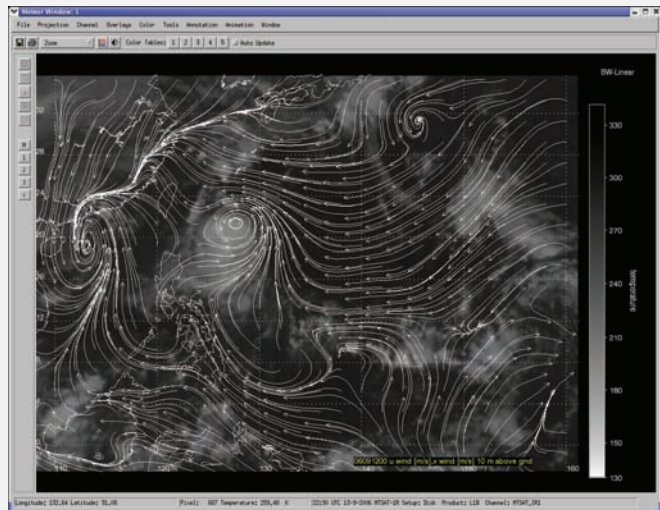
Multiple Window Mode:
Four different channels, four different overlays



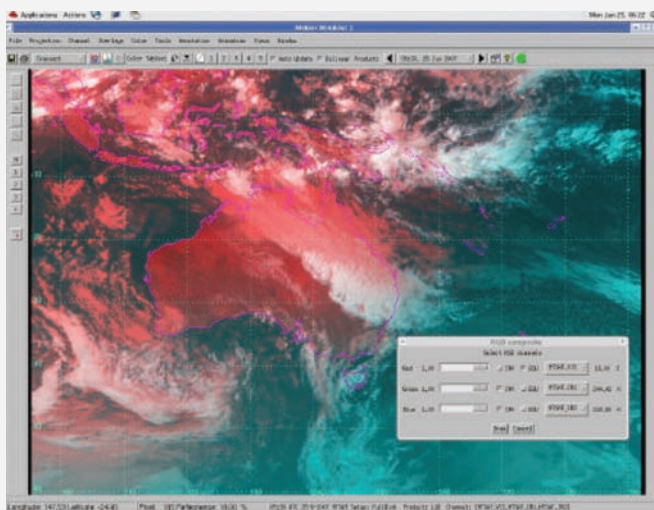
SYNOPT Overlay East Asia
(Hi-Resolution)



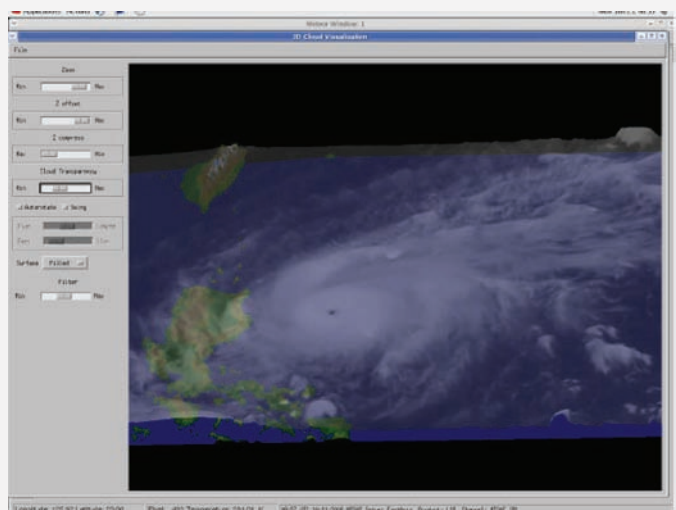
GRIB data overlay: U, V wind at 100 Mb (CONTOUR)



GRIB data overlay: U, V wind 10m above ground
(STREAMLINES)



Example RGB (MTSAT Red: VIS, Green: IR1, Blue:IR2)



MTSAT IR1 3D Cloud Animation : TC Chebi
approaching the Philippines