

GEOSAT400

COMS1 & MTSAT LRIT

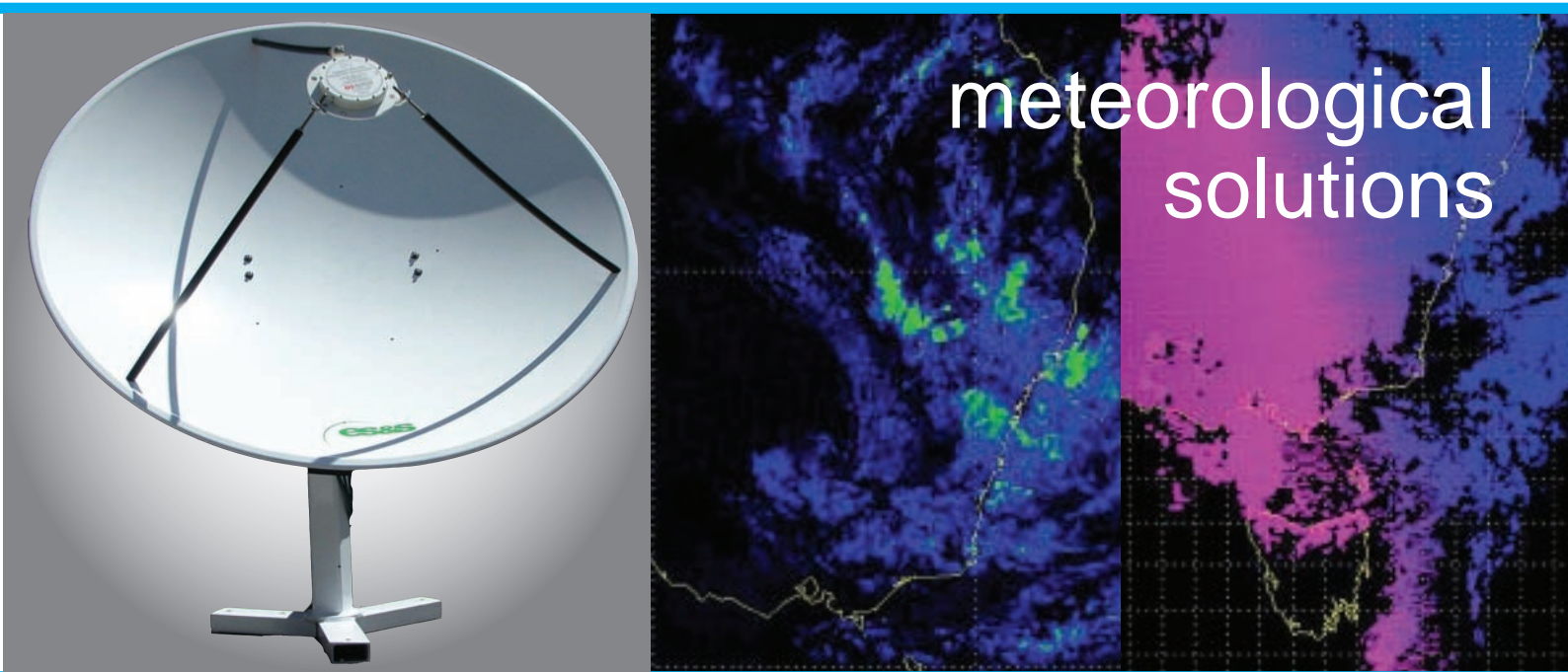
FEATURES

- Fixed parabolic dish
- Feed, LNA and Downconverter
- Ingest processing and display workstation
- Low Rate Information Transmission (LRIT) reception
- METEOR LT image processing system

The GEOSAT400 ground station is a high-performance system designed to receive data from the Japan Meteorological Agency's MTSAT spacecraft and the Korean Meteorological Administration's Coms1. It is a complete turn-key system, providing all hardware and software necessary to receive Low Rate Information Transmissions from the spacecraft and process the data into image files.

The GEOSAT400 LRIT ground station comprises a fixed parabolic dish, LNA, downconverter, and an Ingest data processing and display workstation. This workstation processes the incoming data, producing unique products for display and enhancement by the METEOR LT image processing system.

REMOTE SENSING



The GEOSAT400 groundstation is a reliable, high-performance, complete turn-key system for Coms1 and MTSAT LRIT.

METEOR LT is a powerful image processing system for weather forecasters, remote sensing specialists and other uses.

Features include:

- Animations
- Zoom and pan
- Histogram equalisation
- Export of products in standard formats



Environmental Systems & Services | 141 Palmer Street, Richmond VIC 3121 Australia | T + 61 3 8420 8999 | F + 61 3 8420 8900 | meteorology@esands.com |



ISO 9001
CERTIFIED



TECHNICAL SPECIFICATIONS

ANTENNA

Type	Solid metal
Diameter	1.8m
Alignment	On screen signal strength indicators
G/T	7.8 dB/K

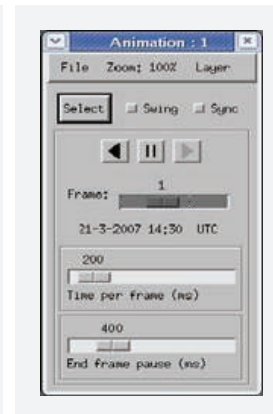
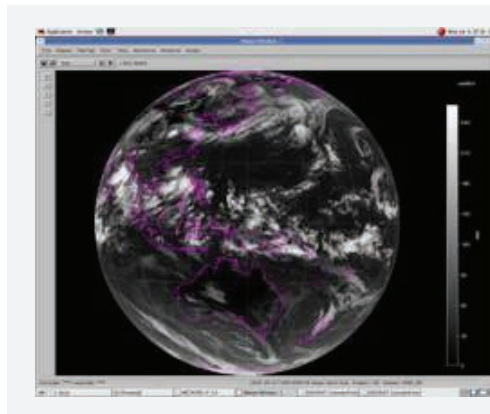
FEED, LNA, DOWNCONVERTER

Noise Figure	0.8dB typical, 1.2dB max.
Input centre frequency	1702.500MHz
Output centre frequency	137.500MHz
Conversion gain	>45dB, 48 dB typical
Output impedance	50 ohms
Temperature (operating)	-20 to 60 degrees C

RECEIVER

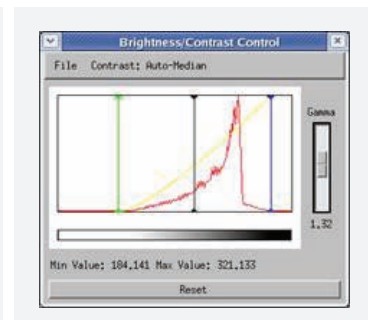
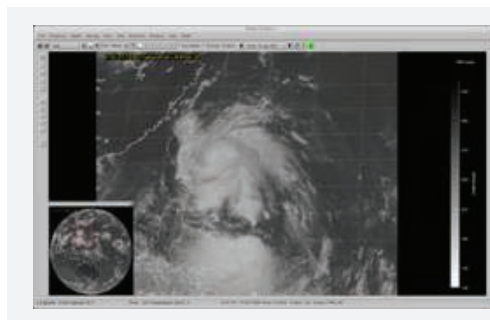
Input Frequency	126 to 154 MHz
Input dynamic range	-90 to -50dBm
Input Impedance	50 ohms
Demodulation modes	BPSK, PSK
Support symbol rates	0.1 to 2.7 MSPS
Temperature (operating)	0 to 50 degrees C non-condensing
Interface	RS-232 9600 baud

Image loaded for analysis



Animation. File selection, loop speed and save as MPEG.

Zoomed image with pan capability



Brightness and contrast tool, with automatic equalisation option.