

Simple and flexible.

You see it – you get it!

Quick Touch features:

Datalogger performance verification

- graph sensor data and diagnostic parameters
- battery load tests; view voltage before and after (requires dummy load on battery)
- test transmissions of HDR G5; view voltage before and after (requires dummy load for G5)
- view current sensor readings
- view history files and upload to USB stick

Data viewing and collection

- view data in table format
- graph logged sensor values, or other logged variables, against time
- fast data upload to USB stick upon connection (approximately 5 seconds for 1 year of data including logger audit and telemetry records)

Data logger programs (DLPs)

- view & edit existing programs

- set & modify sensor sampling rates
- create new programs and install new DLPs from a USB stick
- retrieve existing DLP to a USB stick

HDR GOES Transmitter

- view and edit operating parameters
- enter NESSID's
- view forward and reflected power stats to check antenna performance
- trigger forced transmissions; select channel

Service reports

- simple download to USB stick: F6 audit log; G5 audit log and transmission performance parameters; logged data; data logger program revision history.
- latitude, longitude, and elevation can be logged with sensor readings.

Firmware updates

- supports updated firmware installation from USB stick for F6 Operating

System, Quick Touch interface, and G5 Operating System

Sensor settings

- enter calibration coefficients
- view, edit & set offsets for sensors
- view, edit & set operating parameters for SDI-12 sensors
- Set or edit RVT "Alert" thresholds

Rain variables and settings

- view, edit or zero the rain count values
- set rain counter reset date

Variable state setting

- variables can be optionally set to be retained during power-off or set to be erased during power-off

Password Protection

- password protection is supported for all functions that modify station operating parameters

Specification highlights for the F6 Datalogger and optional G5 HDR GOES Transmitter

User Interface

- Quick Touch System with color touch screen display, 2.88" x 2.25"
- Displays system status and graphs stored and current readings
- Displays voltage and current separately for battery and solar panel and battery temperature
- Supports troubleshooting, configuration, and programming.

Computer Device Ports

- 2 waterproof USB 2.0 host ports. 1.5 Mbps and 12Mbps support for memory sticks, mouse, keyboard
- 1 waterproof USB 2.0 12 Mbps device port with automatic PC detect

CPU, Power & Memory

- 32-bit ARM CPU
- 64 MB RAM; 512 MB non-volatile flash for data & program storage

Environmental sealing, size, weight

- Waterproof, O-ring sealed, cast aluminum & stainless steel hardware
- Dimensions: 10" w x 8" h x 6" d
- Weight: Approx 8 lbs

Sensor Ports

- Waterproof, color-coded military-style connectors
- Dedicated ports for wind speed, wind direction, rain gauge, temperature & humidity, fuel stick
- 2 independent SDI-12 V1.3 ports (solar radiation, barometric pressure, ultrasonic wind, other SDI sensors)
- Optional, configurable analog expansion module

Power Supply

- Internal, temperature compensated charge regulator; quiescent current use < 10 mA
- Waterproof, military style bayonet connectors for solar panel, and battery, with supply current and temperature sensor

Serial Ports (Communication)

- 2 ports factory configured as internal GOES transmitter & 1 external, waterproof military style bayonet connector; or
- 2 external, waterproof military style bayonet connectors

Temperature

- Display operation: -20 to +60 C
- Datalogger operation: -40 to +60 C
- Storage: -55 to +70

Optional Internal G5 GOES Transmitter

NESDIS certified HDR GOES Transmitter

- Configurable for 100, 300, or 1200 bps
- Self-timed and random transmissions
- BLM format

Time Keeping

- Setting accuracy to +/- 100 microseconds automatically synchronized to GPS
- Drift without GPS of +/- 10 milliseconds/day
- 28 day operation without GPS (after initial GPS synchronization)

Frequency Stability

- Initial accuracy of +/- 20 Hz synchronized to GPS
- Short term drift of +/- 0.04 Hz/sec
- Ageing of +/- 0.1 ppm /year

QDII

Quick Deploy Weather Station

With the new F6 Datalogger "Quick Touch" System



On site weather monitoring for prescribed burning, wildfire, or Hazmat applications.



environmental systems & services
8 River Street, Richmond VIC 3121 Australia
T + 61 3 8420 8999 | F + 61 3 8420 8900
meteorology@esands.com | www.esands.com

ISO-SM-B-001 Rev2



A complete **RAWS** system in about 15 minutes!

Fast and Simple

What do experienced Prescribed Burn Specialists and FMO's like about the FTS quick Deploy stations?

"The ability to be installed and recording data within 15 minutes: no tools, no specialized technicians needed, no programming... everything just clicks together, the system is complete and it features FTS's legendary reliability and durability."

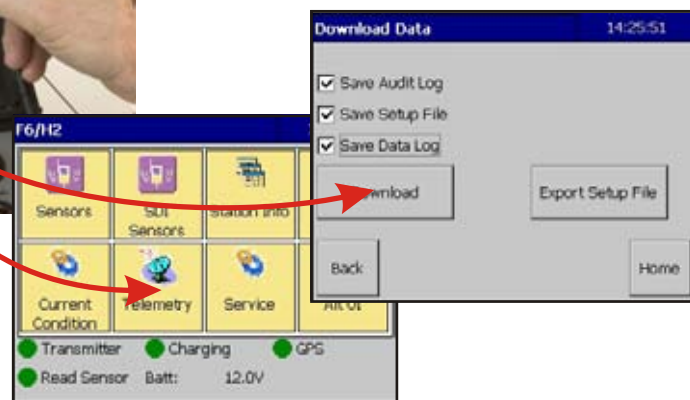
The FTS quick Deploy Station, the preferred solution for onsite weather monitoring during prescribed burn operations, is used extensively by the **US Forest Service, US National Park Service, US Fish and Wildlife, US Bureau of Land Management, State agencies and Canadian Government agencies.**

No Laptop Required

Thanks to the 'touch screen' on the F6 datalogger, all station operations can be performed with a series of touches to the PDA-like screen. See current conditions, look back through logged data, look at a quick graph of data, change the annual rain set all in seconds and without the need for cables and a laptop computer.

Touch screen panels are generated with a simple touch of the finger or stylus.

Virtually all datalogger functions are carried out from these screens.



No Programming. No Tools.

Color coded military style connectors and easy-fit mounting brackets make installation and operation a snap. The station arrives fully programmed and features automatic re-initialization after power interruptions.

15 Minute Setup

The Quick Deploy station is fully operational and recording data in about 15 minutes

Compact and Portable

This lightweight system is easily handled, transported, and set up by one person. The entire station packs into two soft-sided shipping/storage cases.

Case 1: 15"X20"X38" 63 lbs loaded

Case 2: 12"X24"X38" 75 lbs loaded



GOES/GPS Antennas

Omni-directional GOES antenna requires no alignment or assembly
GPS antenna automatically sets datalogger time and provides exact station location.



The QDII 20 watt solar panel is installed in seconds.

Solar Panel

Rear mounted solar panel and electronic power manager provide reliable and continuous power under all conditions.

Download to Flash Memory

With a simple touch screen selection, you can download all data and information files from your datalogger directly to a flash memory stick.

Review your data on a PC back in your office.



Download data to a cell phone (with data storage capabilities), and transmit it via a cellular call.

Create and download a complete record of every site visit.

GOES Satellite Telemetry

Weather data are transmitted hourly via the GOES satellite network, and are accessible from any PC with internet access.

"Voice" Weather Broadcasts

The optional RVT (Radio Voice Transmitter) broadcasts current weather conditions on demand, or automatically when preprogrammed weather thresholds are exceeded, i.e. if local weather conditions 'go out of prescription' during a burn.

Complete and Flexible

The Quick Deploy Station typically includes wind speed & direction sensor, temperature & humidity sensor, and tipping bucket rain gauge

Options include fuel stick sensor, solar radiation sensor, or barometric pressure sensor. A variety of other SDI sensors are also available

Integrated Communications

Cabinet has space for any two of the several optional communications technologies.

Intelligent Power

- ✍ Microprocessor controlled power management maximizes battery life
- ✍ Monitors solar panel output and optimizes charging voltage according to ambient temperature
- ✍ Temporarily suspends communications devices if a low battery status is detected

And One Tough Datalogger

The only datalogger that comes standard with:

- ✍ Built in GOES transmitter
- ✍ Three levels of lightning protection
- ✍ Waterproof case and connectors
- ✍ Quick connect, color coded military-spec connectors
- ✍ SDI interface for flexible sensor options.
- ✍ Touch Screen eliminates need for a laptop and communication cables in field

