



environmental systems & services

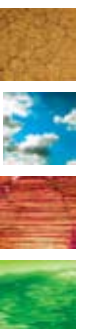
COMPANY PROFILE

engineering solutions for monitoring the environment

www.esands.com



PROUDLY AUSTRALIAN



Environmental Systems & Services (ES&S) is an advanced technology company, specialising in solutions in environmental and allied fields such as meteorology, hydrology, seismology, oceanography, air quality, and geotechnical engineering.

We understand the importance of using reliable, proven and appropriate technology when dealing with extreme environments. Our installed base covers all environmental extremes throughout Australia, Asia and the Antarctic. Indeed many of our clients have been using our systems for many years, and it only serves to reinforce our business philosophy of quality in design and support services.

ORGANISATIONAL CAPABILITY

ES&S is the largest Australian company specialising in meteorological, oceanographic, seismic, environmental and geotechnical products and services and has been operating for more than 30 years. ES&S has offices in Melbourne and Brisbane, and representatives in India, Indonesia, Malaysia, Hong Kong, Taiwan, Korea, Japan, China, Philippines, USA, Canada, Vietnam, Thailand, Brunei, Bangladesh, Iran, Finland, Germany, France, South Africa, UK and Chile.

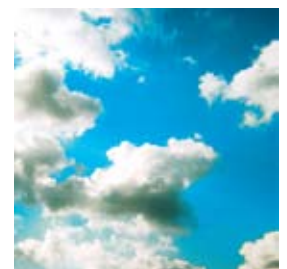
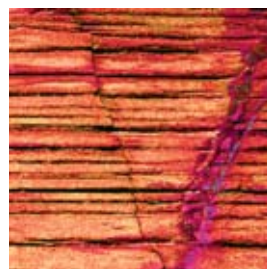
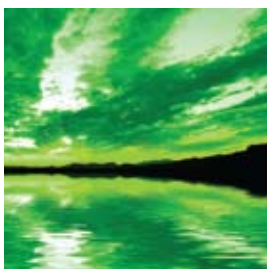
ES&S supplies EEC weather radars and associated radar data processing and display systems to the Australian Bureau of Meteorology and other National Meteorological Services in Asia and the Pacific region.

In the last 20 years ES&S has supplied 48 radars to the Australian Bureau, eight radars to the Malaysia Met Department, four radars to the Indonesian Bureau of Meteorology and Geophysics, three radars to Meteo France, New Caledonia and two radars to the Fiji Metrological Service (the latter two through the Australian Bureau). Furthermore, ES&S has a long history of collaboration with major government and private industry organisations, including CSIRO, the Bureau of Meteorology, Geoscience Australia, Malaysian Meteorological Service, Bureau of Meteorology and Geophysics, Met Service New Zealand, National Institute of Water & Atmospheric Research and the Hong Kong Observatory.

ES&S has extensive experience in the design, manufacture, installation and support of weather satellite ground reception systems and tidal monitoring systems throughout Australia and Asia, and has been a major supplier to national weather bureaus, port authorities and military in the region.

ES&S also has extensive representation arrangements with manufacturers from USA, Canada, Norway, United Kingdom, Netherlands, China, and India.

Like all successful businesses, the staff of ES&S is its most important asset, with all key functions handled by qualified professionals. Our company objectives for growth require the best quality service and products at all times, and our enthusiastic and dedicated staff sustains that momentum.



PRODUCTS & SERVICES

Currently our divisions provide the following products and services:

METEOROLOGY

- Meteorological satellite reception systems and product generation
- Computer Message Switching Systems
- Tropical Cyclone Warning Systems
- Weather radar systems including product generation
- Automatic Weather Stations supply and installation
- Atmospheric profiling sensors
- Meteorological infrastructure projects

WATER RESOURCES

- Stream flow / rainfall / water quality
- Flood / pollution critical warning systems
- Ground water resource management
- Environmental impact studies
- Water resources infrastructure projects

OCEANOGRAPHIC

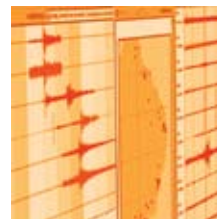
- Tide Gauges and high accuracy acoustic and radar level sensors
- Ocean Buoys
- Wave & Current Radar
- Oil Spill Detection

GEOTECHNICAL

- Rock stress and deformation monitoring equipment and services
- Hydraulic fracture testing equipment and services
- Underground and surface mining monitoring networks
- Geological stress consultancy services
- Geotechnical instrumentation
- Lab Equipment

SEISMOLOGY

- Seismic event data acquisition
- Earthquake preparation, alarm and response services
- Dynamic properties of structures ie. dam safety
- Micro-seismic systems and services
- Seismic Blast Recording



environmental systems & services

COMPANY PROFILE
engineering solutions for monitoring the environment

FACILITIES

ES&S has offices in Melbourne and Brisbane. Design, manufacturing and calibration of instrumentation takes place at our Melbourne Manufacturing Facility and Head Office, which includes the following features:

- Over 700m2 factory manufacturing space for large project system configuration
- Over 200m2 calibration facility with state of the art calibration equipment for pressure, temperature, water quality instrumentation calibration (all devices are certified to NATA standards)
- Melbourne inner city limit location – central to all major facilities including component suppliers, transport depots, airports, major hotels
- Large conference room for holding product training courses and other functions

DESIGN

ES&S has a substantial Research and Development division that includes the following:

- Principal Design Engineers for all products
- Engineers for electronic, mechanical, RF, software, embedded systems, CAD drafting
- Prototype Engineers for product and system development
- CAD drafting applications including 3D rendering types

QUALITY ASSURANCE

ES&S is a company practicing manufacturing techniques specified in AS/NZS ISO9002:1994 standards. The standard covers a quality management system for the supply and manufacture of remote data acquisition instruments for seismic, water and geological event monitoring and the provision of related services. In July 2008 ES&S began a process to achieve accreditation under the new ISO9001:2008 standard.

MANUFACTURING

A large instrument manufacturing facility including:

- Electronic assembly line
- System configuration
- Mechanical engineering workshop
- Calibration laboratory
- Parts inspection facility

FIELD SERVICES

- Installation / Commissioning Technicians and Engineers
- Maintenance and Software Engineers
- Customer Support Officers

STAFF

ES&S currently has a full time staff of 40 persons. We also have access to specialists and experts who work with us on a consultancy basis as required.

