

VISUAL_SUNT



This program is a graphical interface for Windows® of the SUNT program, the 32 bits Windows® version of the SU (Seismic UNIX) freeware, the software for the data processing of "Centre of Wave Phenomena".

SUNT is composed by more than 100 modules which carry out every reflection seismics data processing step, but without graphical display. Visual_SUNT is a perfect integration to it providing for the conversion and processing of data offering different possibilities to display the results:

- Black and white
- Colour or grey scale in function to the variations of the signal amplitude
- Colour
- Wiggly trace
- Positive half wave

VISUAL_SUNT MAIN UTILITY FUNCTIONS



- direct conversion of files from SEG format to SU format
- conversion from SU format to KGS format
- possibility to edit file headers
- display of header
- polygonal "mute and kill" on screen
- display of SEG2 format
- possibility to easily enter every kind of data concerning the survey geometry
- geometry control and mapping
- filters
- possibility to invert the trace polarity
- lay out of the reflection hyperbola
- first arrivals
- frequency spectrum
- frequency filtering
- speed scan
- SORT-NMO-STACK (Sorting, Normal Move Out, Stacking)
- on-line guidance with the description of all SUNT modules

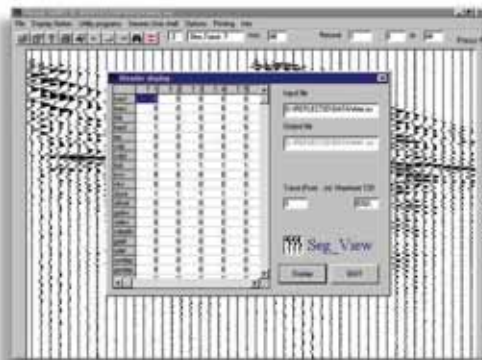
Furthermore, using the result printing modules you may obtain colour, black and white or amplitude range scale print-outs; or you may save images as BMP files. Visual_SUNT is supplied on CD-ROM, complete with all programs, demonstration data, examples of batch programs, manuals and documentation.

DISTRIBUTOR:

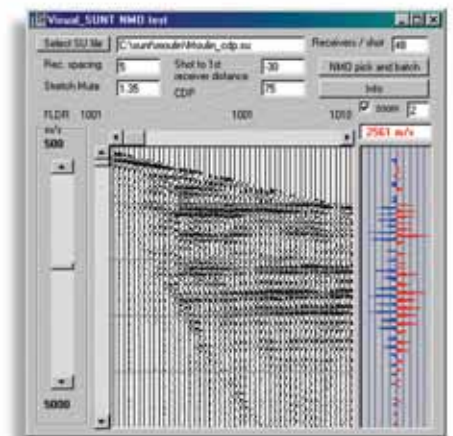


Environmental Systems & Services
 8 River Street Richmond
 VIC 3121 Australia
 T + 61 3 8420 8999
 F + 61 3 8420 8900
 geotechnical@esands.com
www.esands.com

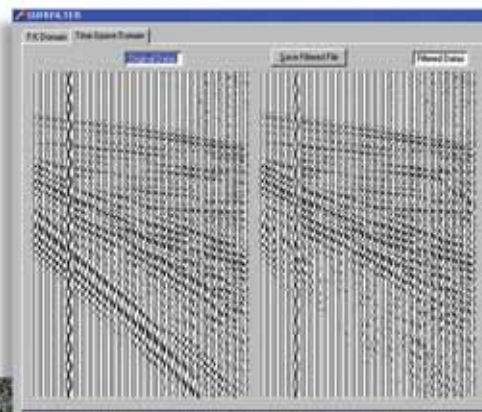
Data input



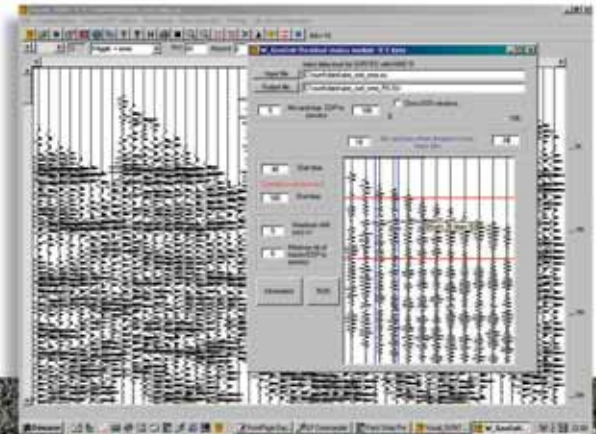
Test normal move out



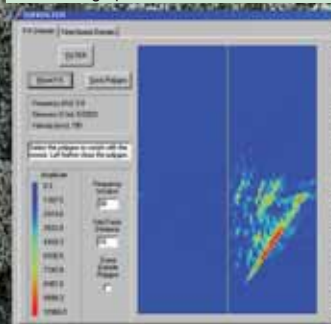
F-K filtering



Residual statics



F-K filtering spectra



Final data stacking

